

**Anti-Complement C7 Picoband Antibody**  
**Catalog # ABO12891****Specification**

---

**Anti-Complement C7 Picoband Antibody - Product Information**

Application	WB, E
Primary Accession	<a href="#">P10643</a>
Host	Rabbit
Reactivity	Human, Mouse, Rat
Clonality	Polyclonal
Format	Lyophilized

**Description**

Rabbit IgG polyclonal antibody for Complement C7 detection. Tested with WB, Direct ELISA in Human;Mouse;Rat.

**Reconstitution**

Add 0.2ml of distilled water will yield a concentration of 500ug/ml.

**Anti-Complement C7 Picoband Antibody - Additional Information**

**Gene ID** 730

**Other Names**

Complement component C7, C7

**Application Details**

Western blot, 0.1-0.5 µg/ml<br> Direct ELISA, 0.1-0.5 µg/ml<br>

**Subcellular Localization**

Secreted.

**Contents**

Each vial contains 4mg Trehalose, 0.9mg NaCl, 0.2mg Na<sub>2</sub>HPO<sub>4</sub>, 0.05mg NaN<sub>3</sub>.

**Immunogen**

E. coli-derived human Complement C7 recombinant protein (Position: R233-D453).

**Cross Reactivity**

No cross reactivity with other proteins.

**Storage**

**At -20°C; for one year. After r°Constitution, at 4°C; for one month. It°Can also be aliquotted and stored frozen at -20°C; for a longer time. Avoid repeated freezing and thawing.**

**Anti-Complement C7 Picoband Antibody - Protein Information**

**Name C7****Function**

Constituent of the membrane attack complex (MAC) that plays a key role in the innate and adaptive immune response by forming pores in the plasma membrane of target cells. C7 serves as a membrane anchor.

**Cellular Location**

Secreted.

**Anti-Complement C7 Picoband Antibody - Protocols**

Provided below are standard protocols that you may find useful for product applications.

- [Western Blot](#)
- [Blocking Peptides](#)
- [Dot Blot](#)
- [Immunohistochemistry](#)
- [Immunofluorescence](#)
- [Immunoprecipitation](#)
- [Flow Cytometry](#)
- [Cell Culture](#)

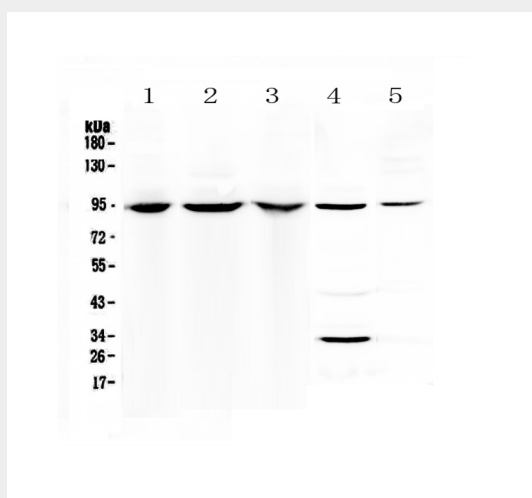
**Anti-Complement C7 Picoband Antibody - Images**

Figure 1. Western blot analysis of Complement C7 using anti-Complement C7 antibody (ABO12891).

**Anti-Complement C7 Picoband Antibody - Background**

This gene encodes a serum glycoprotein that forms a membrane attack complex together with complement components C5b, C6, C8, and C9 as part of the terminal complement pathway of the innate immune system. The protein encoded by this gene contains a cholesterol-dependent cytolysin/membrane attack complex/perforin-like (CDC/MACPF) domain and belongs to a large family of structurally related molecules that form pores involved in host immunity and bacterial pathogenesis. This protein initiates membrane attack complex formation by binding the C5b-C6 subcomplex and inserts into the phospholipid bilayer, serving as a membrane anchor. Mutations in this gene are associated with a rare disorder called C7 deficiency.